




User's Guide to Myth Chat

Installation

Myth Chat allows you to conveniently connect to MariusNET or similar server without the need to load the game. Thus, if you wish to logon to chat with friends on a myth server, Myth Chat provides a simple and easy means of doing so.

Myth Chat is a stand-alone application that requires a JVM (aka Java Virtual Machine), which allows Myth Chat to run natively on Windows, Linux and Mac OS X .

If you are on Mac OS X, a JVM comes along with the OS so no need to worry about installing a JVM. However, if you are running a windows based OS, you will likely need to download, and install a JVM from java.sun.com. The suggested JVM to obtain is JRE version 1.4 or higher.

If you do not have a JRE currently installed, you may find one for download at Sun Microsystems website here:

<http://java.sun.com/downloads/index.html>

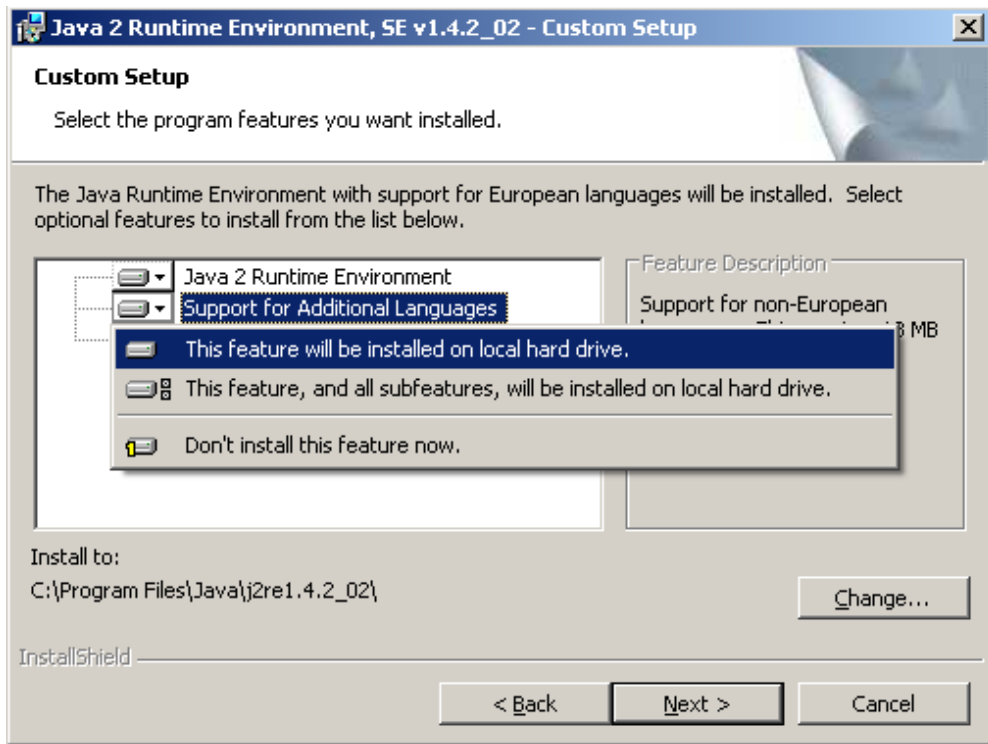
To access the 1.4.2 JRE the link is here:

<http://java.sun.com/j2se/1.4.2/download.html>

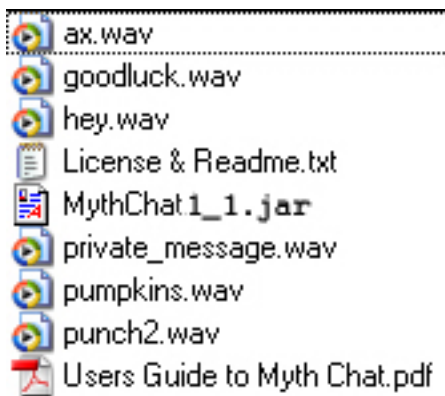
After downloading the JRE, it is REQUIRED that you do a CUSTOM INSTALL, and choose any additional language support and language packs. Failure to do so may render Myth Chat inoperable¹ because Myth Chat requires these additional files.

¹ As evidenced by the following error message displayed at the terminal "error:MacRoman class java.io.UnsupportedEncodingException null 6324"

See the figure below for reference on what is meant by selecting languages support.



After you have setup and installed the JRE, you will want to unpack the contents of the zip file to a directory of your choosing. There should be nine (9) files in the zip.



The file called "MythChat1_1.jar" is the actual executable, and if your JRE is properly configured, all you need to do is click on the MythChat.jar like you would do with any other program to start it up.

Connecting to MariusNET

If you have not used Myth_Chat before, you should perform one of the following options:

Option 1:

Log on to Mariusnet with a guest account.

- 1) Go to the file menu,
- 2) Select "Options".
- 3) Enter in the word 'guest' (without the quotes) into the user name field.
- 4) Enter anything for the password into the password field.
- 5) Click on the "Save Prefs" button.
- 6) Click the "Connect!" button to sign on to Mariusnet.

You should now be connected to MariusNet.

Enjoy chatting on Mariusnet!

Option 2:

Log on to Mariusnet or compatible server, as a registered user.

- 1) Go to the file menu,
- 2) Select "Options".
- 3) Enter your user name and password into the appropriate fields.
- 4) Enter your Mariusnet registration key into the team field.
- 5) Click on the "Save Prefs" button.
- 6) Click the "Connect!" button to sign on to Mariusnet.

Your MariusNet account is appended to recognize the new client.

However, the client will appear to "hang" on establishing a connection.

Do not worry, this behavior is normal.

- 7) Close the Myth_Chat application down completely.
- 8) Reopen Myth_Chat.
- 9) Go to the file menu,
- 10) Remove the registration key from the team field, replace it with a team name of your choice.
- 11) Click on the "Save Prefs" button.
- 12) Click the "Connect!" button to sign on to Mariusnet.

You should now be connected to MariusNet.

Enjoy chatting on Mariusnet!

Myth Chat Features

Here is a run down of a few features that may you find useful in Myth Chat:

- 1) *Private messaging.* If you select a user from the user list, their name will darken slightly, indicating you have selected the user. You may now type a message, and it will be sent to only the user you have selected. This is same functionality that is seen in the Myth Clients.
- 2) *Play sound upon receiving private message.* If another user private messages you, you will hear a sound alerting you to the fact you received a private message. You may turn on or off the alert sound in the options window, which is accessed by way of File > Options > Sound Check Box.
- 3) *Auto Reply messaging.* If you want to leave a message to other users while you are away from the computer, you may setup Auto Reply messaging. To enable an auto response, go in to the options menu (File > options > Auto Reply) and select the check box and fill in your away message in the text field marked "Away Message:". Note: If you have enabled Auto Reply messaging, and you send any chat to the chat area, Auto Reply will be temporarily be disabled, do not worry as it will automatically re-enable itself after a specified amount of time.
- 4) *Chat Recall feature.* There are always have been times when you typed something and hit enter, only for the person you were talking with to leave, or drop from the server, etc... just before you hit send. With chat recall, pressing the up arrow on your keyboard recalls the last thing you typed. If you press the down arrow you can cycle through ALL of the chat you previously typed for instant recall and retransmission to the chat area. If for some reason you wish to delete the history of the stuff you typed, go to the Edit menu and select "Clear History", this will wipe it out.
- 5) *Finding someone.* If you wish to find another user that is online, go to the File menu and select "Find". Enter the person's name or part of their name, and the find feature will return all listings for people online that match your search criteria and the room that they are in currently.
- 6) *Getting someone's stats.* By double clicking a user from the user list a window will pop up showing the user's stats.
- 7) *Anti-Lamer/Spam feature.* Spamming the chat area is prohibited by the MariusNET terms of use. To curb the abuse of Myth Chat was written to mute and even perma-mute those who insist on spamming.

Acknowledgements

Thanks goes out to Myrd who helped with the “MC” now being displayed alongside the user name.

Thanks to Doobie & Project Magma for their gracious hosting.

And all the beta testers who have helped make Myth Chat possible.

Known Bugs

If you have selected someone to talk with in private chat mode, and a new user joins the room, and shifts the user who you were chatting with up or down on the list, you will no longer be chatting with the same user. Instead, your private message will be sent to the person whose name has been darkened.

If you log on as guest to MariusNET, you might encounter a disappearing user list if more than one person is logged on as guest. If anyone from the aleph 1 programming team can tell me how you guys fixed this bug, please let me know! (The bug shows up in the form of the guest user always having a user ID of 0, even though a non-zero user ID is sent to the Myth Chat client.)

Terms Of Use

By using Myth_Chat, you agree to the conditions set forth by the MariusNet Agreement.

Furthermore:

=====

This license is subject to amendment WITHOUT NOTICE

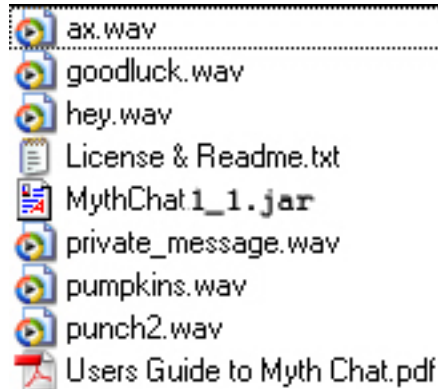
=====

All code is property of either ActiveX ("Ax"), of Clan Plaid. and/or contributing authors.

Rank icons from PurplePeopleEater (PPE)

Sounds extracted by Grasshopper from Myth: The Fallen Lords

DO NOT REDISTRIBUTE THIS SOFTWARE without the following files:



By using this software you agree not to reverse assemble, or reverse compile or use the software and/or code/algorithms/binaries outside the context of this Myth Chat Client (i.e. "SOFTWARE"), without the above authors express permission(s).

Furthermore, you are not permitted to reconfigure this application to connect to a server other than MariusNET at this time.

The additional licensing agreement below refers to only certain portions of code provided by Sun Microsystems, however all other code is the property of ActiveX and/or contributing authors listed in the About menu of the Myth Chat program.

/*

* Copyright 2002 Sun Microsystems, Inc. All Rights Reserved.

*

* Redistribution and use in source and binary forms, with or
* without modification, are permitted provided that the following
* conditions are met:

*

* -Redistributions of source code must retain the above copyright
* notice, this list of conditions and the following disclaimer.

*

* -Redistribution in binary form must reproduce the above copyright
* notice, this list of conditions and the following disclaimer in

* the documentation and/or other materials provided with the
* distribution.

*

* Neither the name of Sun Microsystems, Inc. or the names of
* contributors may be used to endorse or promote products derived
* from this software without specific prior written permission.

*

* This software is provided "AS IS," without a warranty of any
* kind. ALL EXPRESS OR IMPLIED CONDITIONS, REPRESENTATIONS AND
* WARRANTIES, INCLUDING ANY IMPLIED WARRANTY OF
MERCHANTABILITY,

* FITNESS FOR A PARTICULAR PURPOSE OR NON-INFRINGEMENT, ARE
HEREBY

* EXCLUDED. SUN AND ITS LICENSORS SHALL NOT BE LIABLE FOR ANY
* DAMAGES OR LIABILITIES SUFFERED BY LICENSEE AS A RESULT OF OR
* RELATING TO USE, MODIFICATION OR DISTRIBUTION OF THE SOFTWARE
OR

* ITS DERIVATIVES. IN NO EVENT WILL SUN OR ITS LICENSORS BE LIABLE
* FOR ANY LOST REVENUE, PROFIT OR DATA, OR FOR DIRECT, INDIRECT,
* SPECIAL, CONSEQUENTIAL, INCIDENTAL OR PUNITIVE DAMAGES,
HOWEVER

* CAUSED AND REGARDLESS OF THE THEORY OF LIABILITY, ARISING OUT OF
* THE USE OF OR INABILITY TO USE SOFTWARE, EVEN IF SUN HAS BEEN
* ADVISED OF THE POSSIBILITY OF SUCH DAMAGES.

*

* You acknowledge that Software is not designed, licensed or
* intended for use in the design, construction, operation or
* maintenance of any nuclear facility.

*/